



## The Right Drive Platform For Your Application

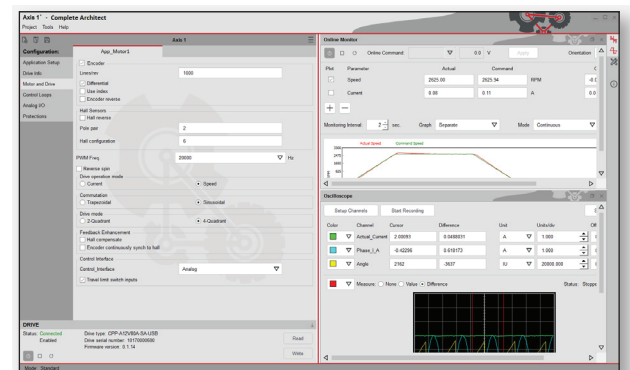
**ElectroCraft's CompletePower™ Plus Universal Drive** takes performance, efficiency and flexibility to the next level, utilizing state-of-the-art digital drive technology combined with an intuitive and highly configurable user interface. Perfect for a wide range of industrial, commercial market, and consumer product applications. There are five standard capacities in the model lineup, plus customized versions are offered to meet large volume OEM requirements.

- Compatible with Brushless DC motors, PMDC Brush motors, and Stepper motors (Open-Loop and Closed-Loop) from 12 to 80 VDC and up to 40A continuous and 100A peak output current.
- Modes of operation include Speed, Current, and Position control via discrete I/O or built-in CAN-bus communication (up to 1Mbit/s)
- Sine-wave commutation for brushless motors using either hall sensors or encoder feedback.
- Advanced Field Oriented Control (FOC) of Brushless and Closed-Loop Stepper motors provides high dynamic response resulting in a robust motor controller with low torque ripple that produces smoother, more efficient motion!
- Open-loop stepper motors support single step up to 256 micro-steps (1MHz max step rate @50% ± 10% duty-cycle).
- Encoder feedback or IxR compensation is available for PMDC Brush motors.
- Easy setup and configuration via USB interface with ElectroCraft Complete Architect™ - Windows-based software.
  - Easy to configure and tune ElectroCraft motors by simply selecting the standard motor model from the included database!
  - Built-in Tutorials help users get started without having to read a manual.
  - Help Function provides easy to understand explanations for parameter settings.
  - Extensive diagnostic and monitoring tools significantly reduce the time involved in setup, tuning and troubleshooting.



ELECTROCRAFT

**CompletePower™ Plus**  
**UNIVERSAL DRIVE**



ElectroCraft

**CompleteArchitect™**

ElectroCraft CompletePower™ Plus – Universal Drive Configuration Software

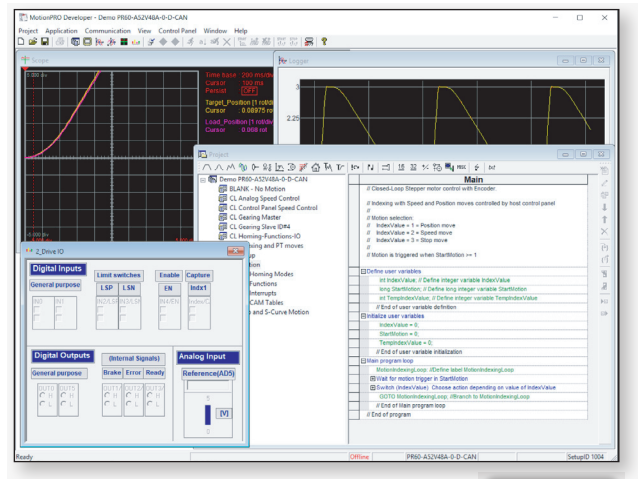
**ElectroCraft's PRO Series** takes drive performance and functionality to the next level by incorporating a fully programmable motion controller with built-in networking! Whether you are controlling a single drive in a stand-alone application or multiple drives in a networked system, configuration and programming is easy using ElectroCraft's intuitive and powerful MotionPRO Suite software.

**PRO Series Features:**

- Compatible with Brushless, Brush, or Stepper motors
- PCB mount or stand-alone chassis configurations
- Voltage range from 12 to 80 VDC
- Output current up to 20A continuous, 40A peak
- Built-in I/O, hall sensor, tach & encoder feedback
- RS232, CAN bus or EtherCAT® (CoE) networks

**Operating Modes:**

- As a single-axis motion controller, autonomously running the program residing in its non-volatile memory.
- As an intelligent slave executing motion sequences triggered by input lines.
- As part of a multi-axis, distributed motion control solution in either stand alone or slave configurations.
- As an intelligent slave executing motion sequences triggered by commands received via RS-232, EtherCAT or CAN bus communication.



ElectroCraft

MotionPRO Software



**ElectroCraft Integrated Motor Drives**

ElectroCraft's PRO Series is also available as part of an integrated motor drive controller solution!

- Available in NEMA 17 and 23 frame sizes
- Multiple configurations available, including:
  - Brushless DC motor (RP-Series)
  - Stepper motor (TPP-Series)
  - Stepper-Type Linear Actuator (APPS-Series)
- Same motion control features and functionality as PRO Series
- Customized solutions available for large volume OEM requirements



Your Genius. Our Drive.

ElectroCraft, Inc.  
2 Marin Way, Suite 3  
Stratham, NH 03885-2578 USA

Tel: (844) 338-8114

Email: sales@electrocraft.com  
www.electrocraft.com