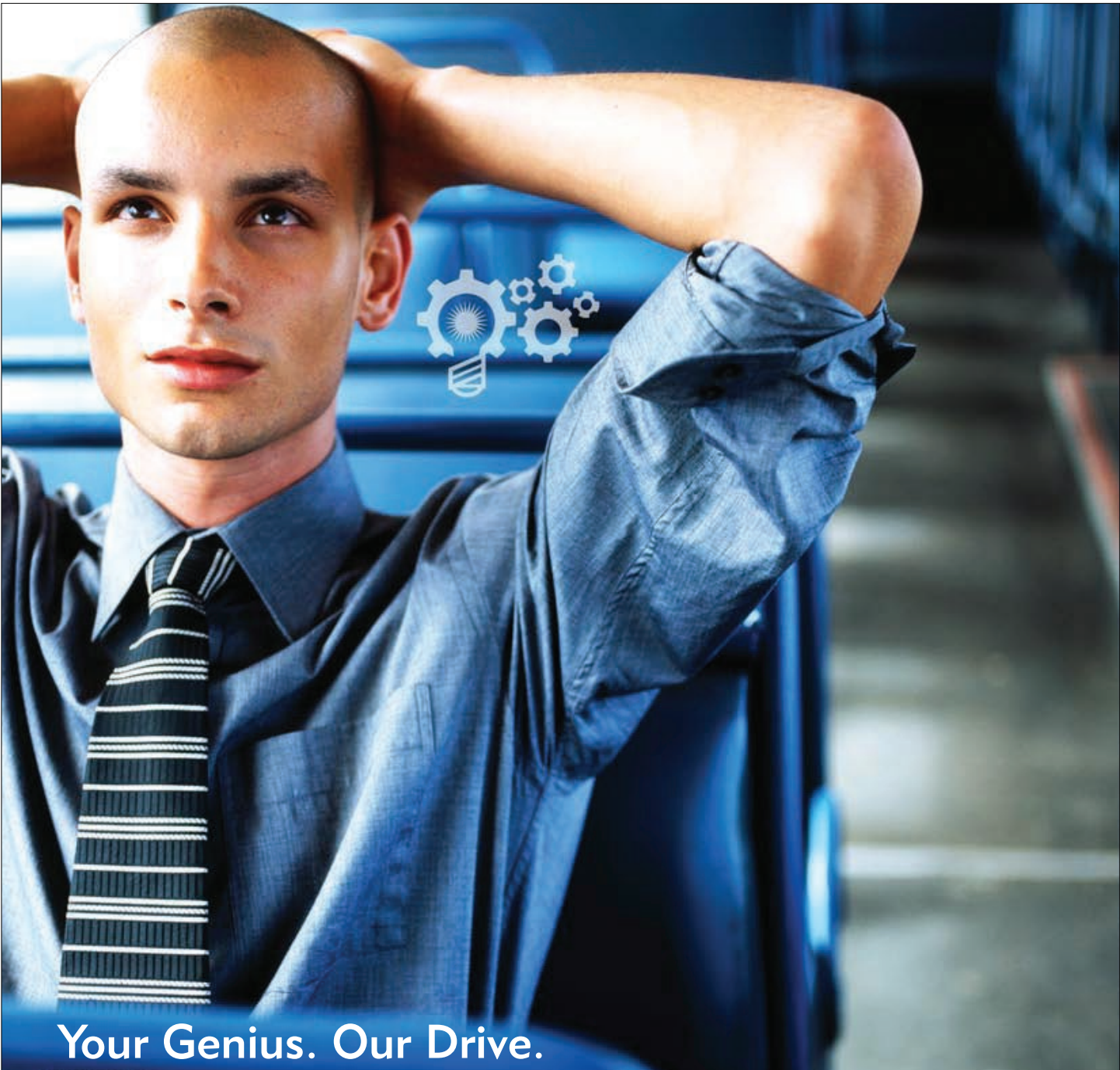




Your Genius. **Our Drive.**

From Stock to Fully Custom-Engineered Motor and Motion Control Solutions.





Your Genius. Our Drive.

For over 60 years, ElectroCraft has been helping engineers translate innovative ideas into reality — one reliable motor at a time. As a global specialist in custom motor and motion technology, we provide the engineering capabilities and worldwide resources you need to succeed. However, it is our philosophy of partnering with each customer that helped build our company. That's why our tradition of hands-on, responsive customer service still drives each and every customer interaction.

We can help with every stage of your process from concept and design to rapid prototyping with domestic, European and Asian manufacturing capabilities. We have a large stock of motor and motion products that can be easily configured to meet your specs. And, if you need a completely custom motor, don't worry. That's our specialty. At ElectroCraft, we're focused solely on helping you design, develop, and build it better. So, go ahead and dream. We'll be here to help you build it.

A Global Specialist in Custom Fractional HP Motion.

The ElectroCraft legacy of motor engineering excellence continues today with an expanded product offering, global logistics and worldwide application and customer support.

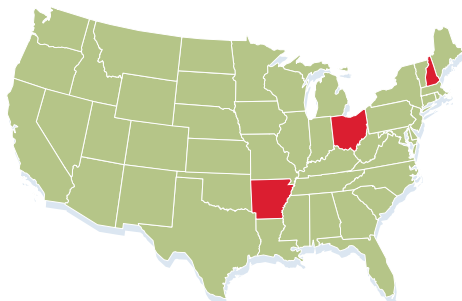
We've combined the individual strengths of EAD Motors, AGI Motors, e-Motion, and ElectroCraft Engineered Solutions to form the new ElectroCraft, Inc. — an agile, global motor and motion powerhouse.

“ElectroCraft Inc. specializes in dependable, application-engineered fractional-horsepower motor and motion products.”

The Whole is Greater than the Sum of Its Parts.

The new ElectroCraft has operations in the United States, the United Kingdom, Hong Kong, China and Germany to provide a local presence for our global customers. We can provide our customers with an increasingly competitive global product offering and superior delivery capability to support our growing global marketplace.

The expertise of each facility makes the whole of ElectroCraft even stronger. **ElectroCraft Ohio** provides unprecedented experience in mobility gearboxes, PMDC motors, high torque stepper motors, linear actuators, as well as AC and DC servomotors. **ElectroCraft Arkansas** built its reputation on dependable C-frame AC and PMDC motors. **ElectroCraft GmbH** in Stuttgart, Germany manufactures a complete line of speed controls and high performance servo drives that power all our motor technologies. **ElectroCraft, Ltd.** in the United Kingdom provides regional value-add assembly operations and European sales support. Customers can now work with one company and benefit from the individual expertise of each facility.



North America

Dover, New Hampshire

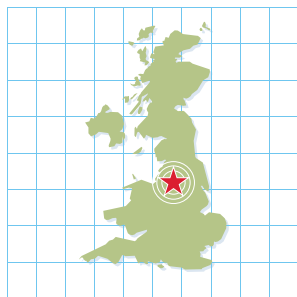
World HQ, motor development, marketing, technical, and application support.

Gallipolis, Ohio

Motor development & manufacturing, marketing, technical, application support and value-added manufacturing.

Searcy, Arkansas

Motor development & manufacturing, marketing, technical, and application support.



United Kingdom

Crewe, Cheshire

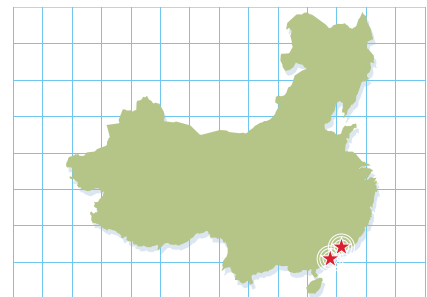
European sales management, application engineering, technical support, cable manufacturing operations and motor value-added manufacturing.



Germany

Stuttgart

Motion control development and manufacturing, technical and application support.



Asia

Hong Kong

Asian HQ, regional sourcing administration, Asian customer and sales support.

Zuhai, China

Motor manufacturing and final assembly.



Powering Commercial Products.

Our motor and motion systems drive thousands of everyday essential machines from refrigerators to aircraft. Whether these products incorporate our stock and configured systems or fully custom solutions, they all have one thing in common. At their heart, our products continue to be built with the rigorous standards of quality that have become an ElectroCraft hallmark.

ElectroCraft products use only the highest quality materials to ensure that the machines that power business work as expected each time, every time.

Mobility Vehicles

ElectroCraft has developed a reputation for quality, reliability and value in the battery operated vehicle marketplace. Superior gear component design coupled with unparalleled manufacturing standards have created the most reliable motor/gearbox combinations that exhibit the lowest noise signatures in their class.

Agriculture + Lawn Equipment

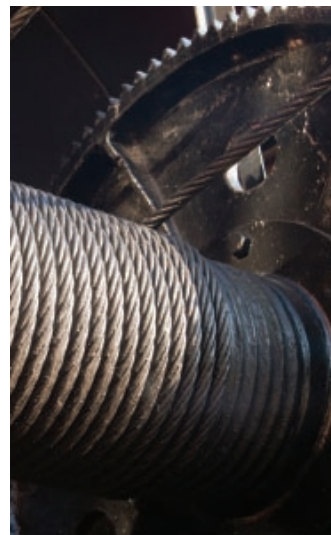
Commercial landscape equipment and agriculture machinery manufacturers count on ElectroCraft motors and motion devices to make their systems ultra-durable and long-lasting. When you need to move the Earth literally, ElectroCraft can help drive you there.

Winches + Hoists

Moving heavy items is no small task. That's why winch and crane manufacturers integrate ElectroCraft. With high starting torques and efficient operating performance, customers can be certain ElectroCraft motors are durable enough to handle day-to-day heavy workloads.

Commercial Refrigeration

ElectroCraft has a long history in the refrigeration industry. As a leading supplier of evaporator fan motors in the United States, ElectroCraft has the global supply chain and domestic manufacturing to meet the needs of even the largest refrigerator manufacturers.



The Motion Products that Make Business Work.

ElectroCraft products use only the highest quality materials to ensure that the machines that power business work as expected each time, every time.

Medical + Instrumentation Equipment

Dentists, doctors, scientists, and engineers use machines that can save or change lives. Everyday this equipment has to work — people's lives and people's livelihood depend on it. ElectroCraft motors drive microscopes, climate analyzers, pumps, and precision scales, as well as a variety of critical medical, dental, and orthopedic equipment.

Lab Analysis Equipment

The future of science is being tested in R&D and analysis laboratories. Our ElectroCraft motor and motion technologies make design systems, pumps and analysis equipment (*like DNA analyzers and chromatographs*) more automated and reliable.

Factory & Industrial Manufacturing Automation

In today's competitive marketplace, when an automated manufacturing process goes offline due to a motor failure, damaged customer relationships and dollars are lost rapidly. Luckily, ElectroCraft works with designers of factory and specialty automation systems (*like conveyors, handlers, large-scale printers, winding and textile machines*) to develop the reliable motors they need.

Electronics & Semiconductor Technology

Semiconductor and electronics manufacturers need precise motion for their feeders, SMD placement equipment, and lithography systems. Slight changes in these automated processes can be very costly. That can mean expensive rework, and, possibly, batches of circuitry scrapped. ElectroCraft provides world-class motors that meet these demanding requirements.



CompletePower™ | Motion Products

With meticulous engineering and advanced electronics, our **CompletePower** speed controls and servo drives offer reliability and precision servo motion control. From sensitive medical dosing systems to rugged professional power tools, our CompletePower devices can handle a wide variety of applications.

RapidPower™ | BLDC Motors

Our BLDC motors provide the rapid acceleration and consistent speed needed for applications from centrifuges to x-y positioning systems. The **RapidPower** product line ensures a steady operation at any speed by utilizing sealed ball bearings and reduced torque ripple from skewed magnetization.

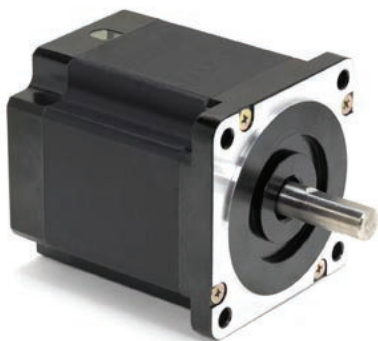
AxialPower™ | Linear Actuators

Based on modified hybrid steppers, PMDC, and BLDC motors, our family of **AxialPower** linear actuators are built to last. Our unique approach to linear motion with low-friction, polymer rotating nuts and stainless steel leadscrews provides high force and linear precision in the smallest packages available.

MobilePower™ | Mobility Products

With a choice of output ratios, our **MobilePower** line of products helps power battery-operated vehicles from wheelchairs to lift trucks. And, to increase durability and decrease noise levels, the robust all metallic gears are hobbled to a precision AGMA 9-Class.

TorquePower™ | Stepper Motors



With non-cumulative position accuracies as low as $\pm 3\%$, the precision of our **TorquePower** motor is matched only by the dependability of its performance. Bi-directional operation and enclosed, permanently lubricated ball bearings provide long-lasting, smooth operation.

DirectPower™ | PMDC Motors



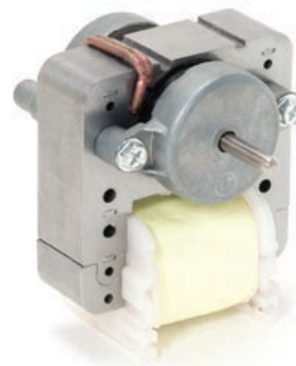
Dynamically balanced armatures and precision ball bearings ensure that the **DirectPower** line maintains its characteristically smooth performance. This durable, totally enclosed, non-ventilated (TENV) motor is available in a broad product line from lower cost, general purpose options to high performance PMDC servo motors.

SolidPower™ Plus | AC Motors



High starting torques and stator windings matched to your application ensure the **SolidPower** product provides lasting performance. The dynamically balanced, skewed rotor bars and precision-machined fits keep vibration levels at a minimum.

SurePower™ | C-Frame AC Motors



Our AC shaded-pole motor, the **SurePower** product, can be utilized for a wide range of air-moving applications — perfect for the rigors of refrigeration and commercial food equipment applications.



Inspiration Hits You When You Least Expect It.

You have the power to think like an inventor. When that moment strikes, we can be there to help provide a motor or motion solution you need to make it work.

To learn more about our products and services, please visit www.electrocrafter.com or contact ElectroCraft, Inc. today and see how we can help power your innovation:

- 1 Progress Drive | Dover | NH | USA | 03820
Telephone: (603) 516-1200
- 524 East Ocean Centre | East TST | Kowloon | HK
Telephone: (852) 3163 2250
- Vor dem Lauch 19 | D-70567 | Stuttgart | Germany
Telephone: +49 (0) 711 727 205-12
- Unit 4 | Crewe Trade Park | Crewe | Cheshire | CW1 6JT | UK
Telephone: +44 (0) 1270 580142



www.electrocrafter.com